



Hermitage Mountain Residences



Hermitage Mountain Residences

The new Hermitage Mountain Residences were opened on December 2017.

Located in Soldeu, Andorra - at 1.850m above sea level, it's a new concept of luxury Residences in the Pyrenees.

You will be able to enjoy 9 luxurious Residences most of them with wonderful views to the ski slopes of Grandvalira – Soldeu, the biggest ski resort of Southern Europe, a perfect place to enjoy the Finals of the FIS-Ski World Cup 2019.

The Hermitage Mountain Residences are totally integrated in the surroundings with a building built with natural materials as stone and wood.

It features 5 floors with stunning, spacious and cosy Residences from one to eight bedrooms and up to 500 sqm.

An exclusive building with all the services of a five star “Leading Hotel of the World” and the comfort of a private chalet.

We are happy to share with you the first pictures of this fantastic project

Welcome to Andorra, welcome home...



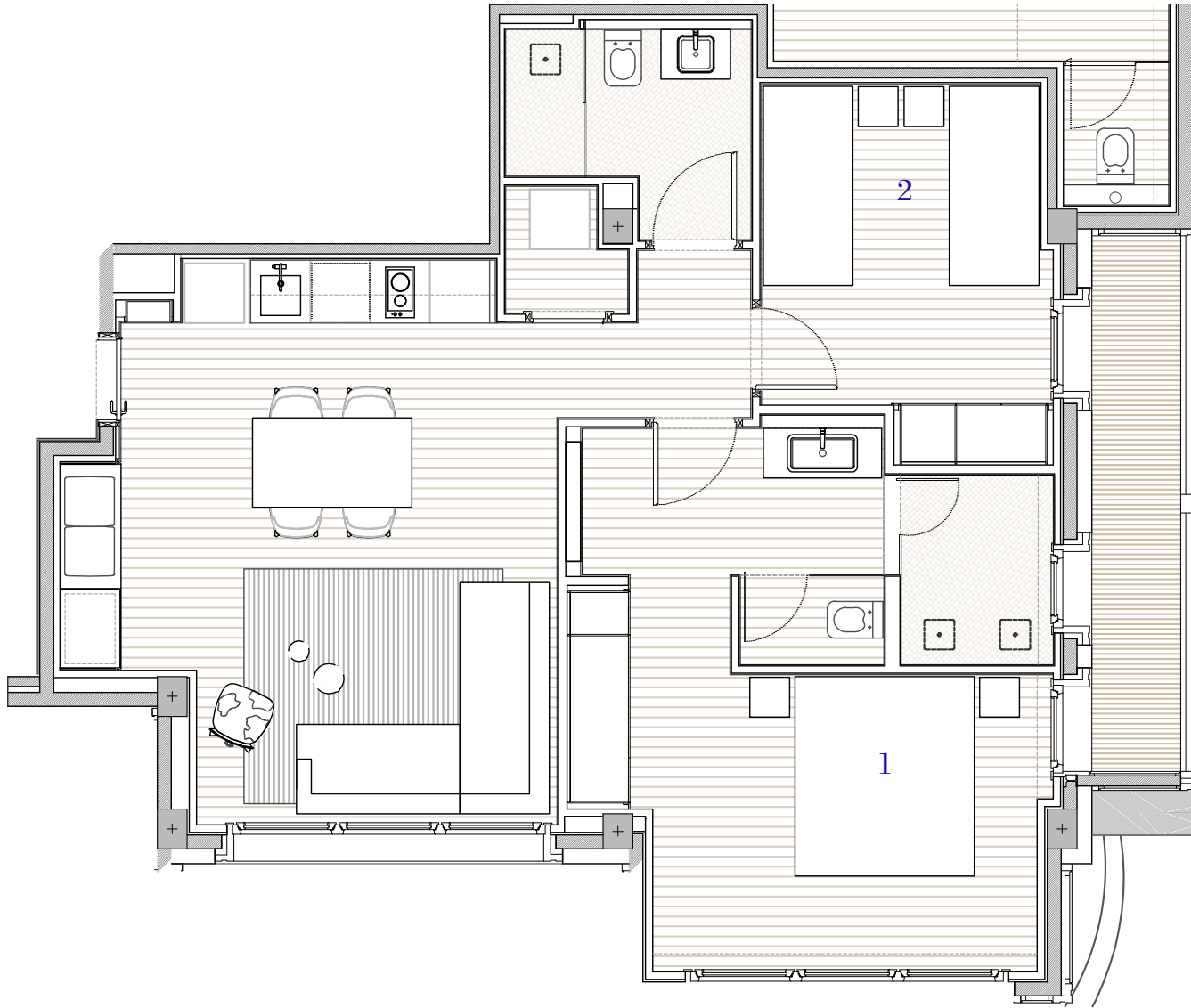
Floor 2



4 residences of 120 m²
1 residence of 240 m²
4 bedrooms



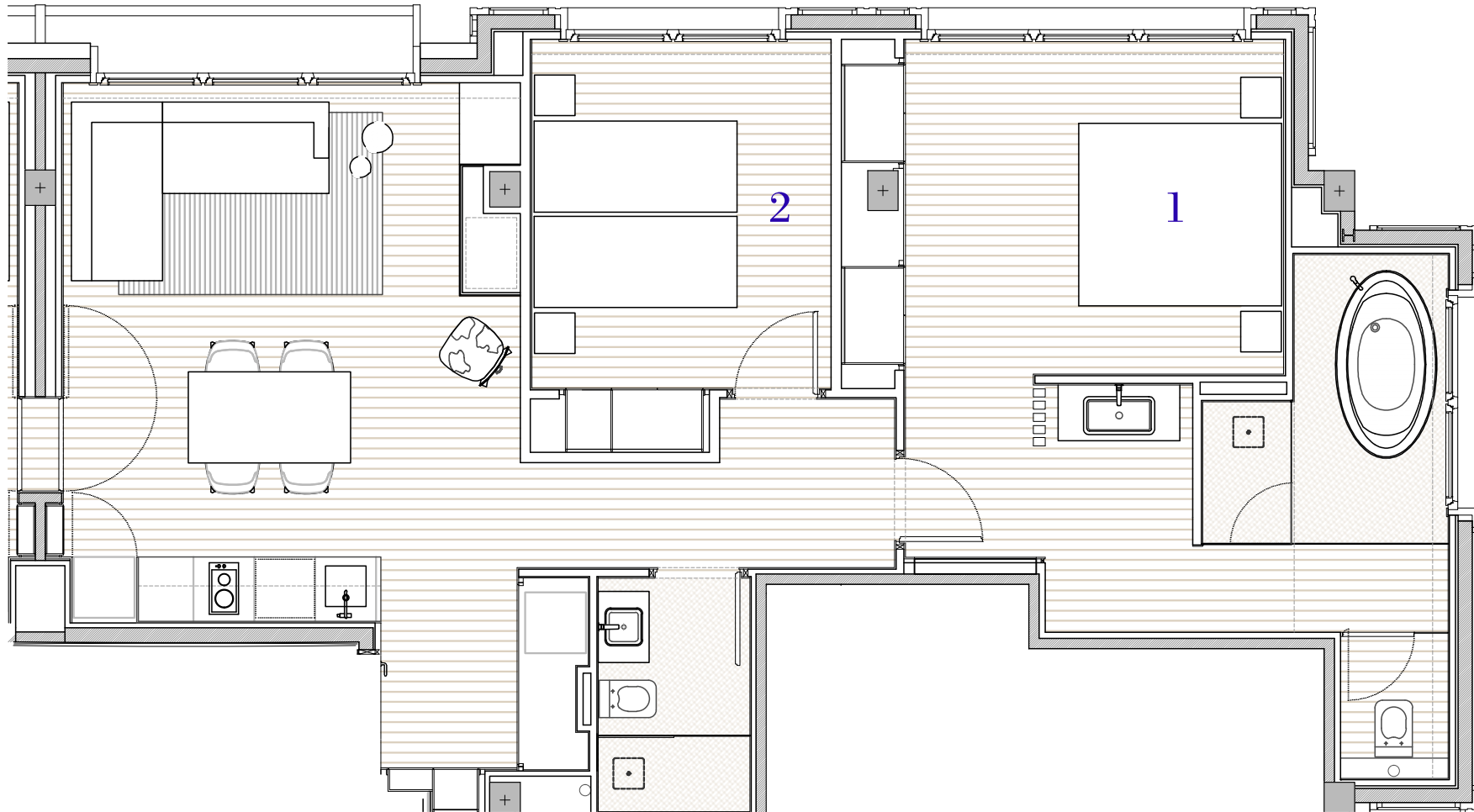
Floor 2 - 2A



120 m²



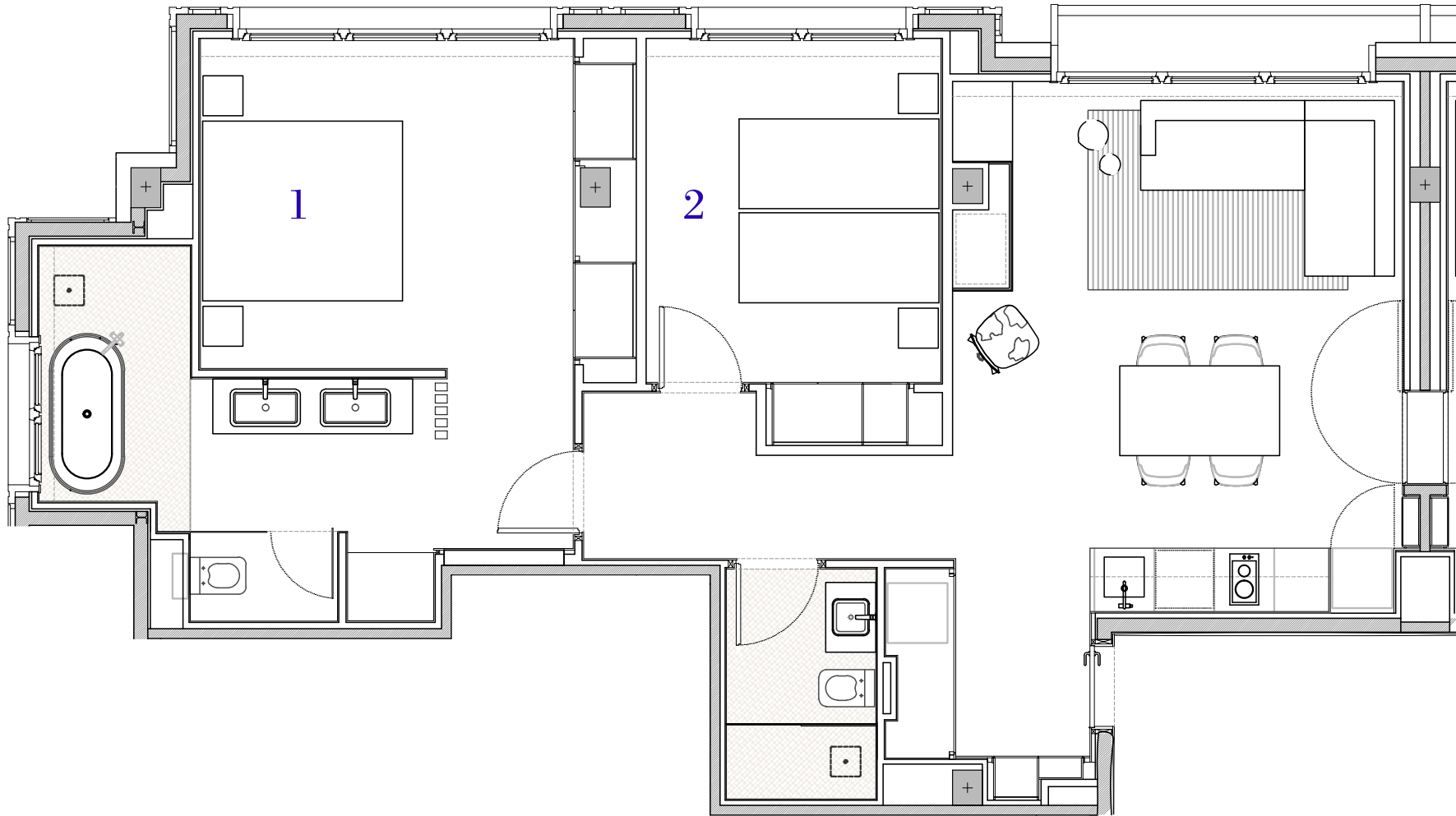
Floor 2 - 2B



120 m²



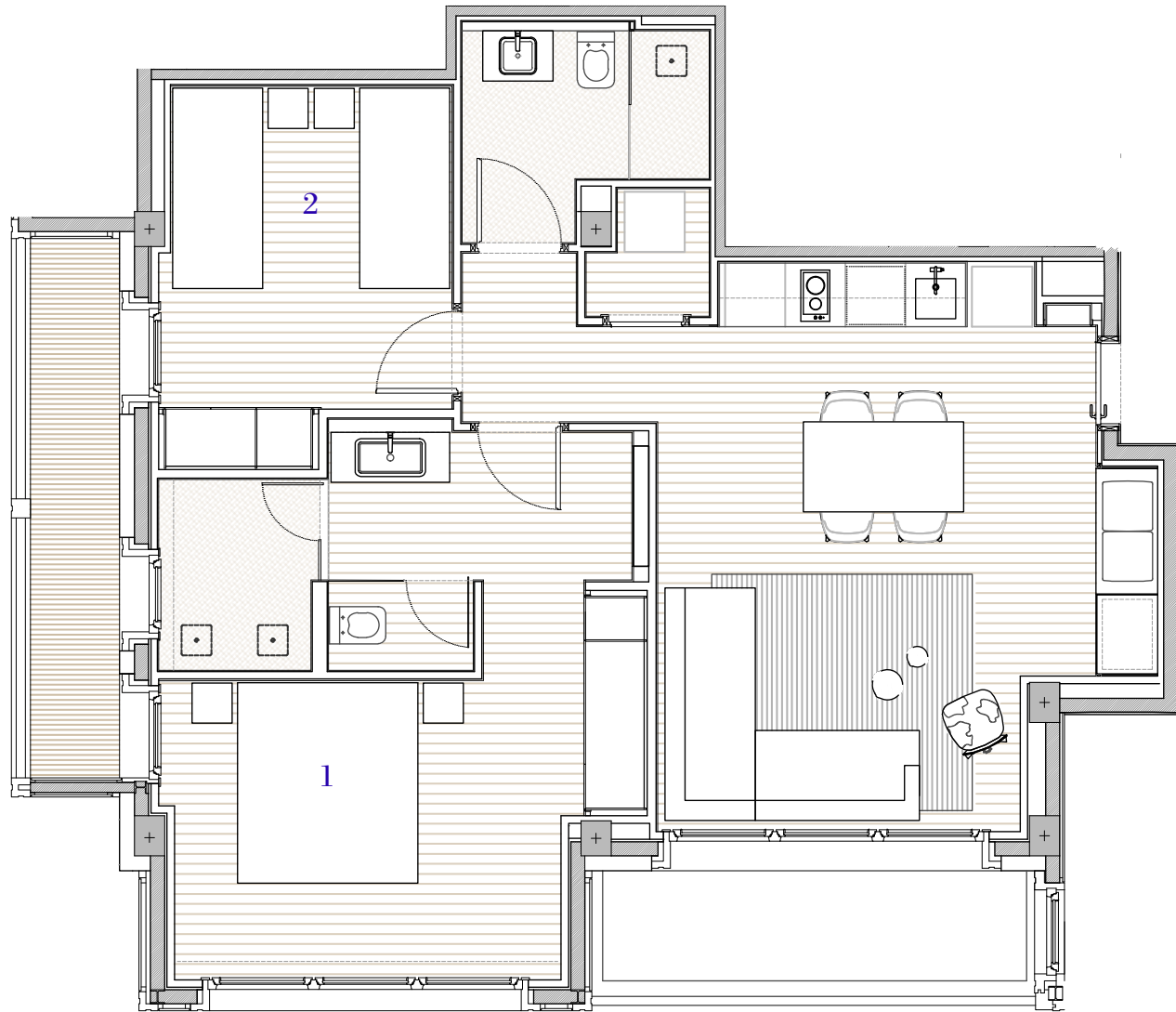
Floor 2 - 2C



120 m²



Floor 2 - 2D



120 m²



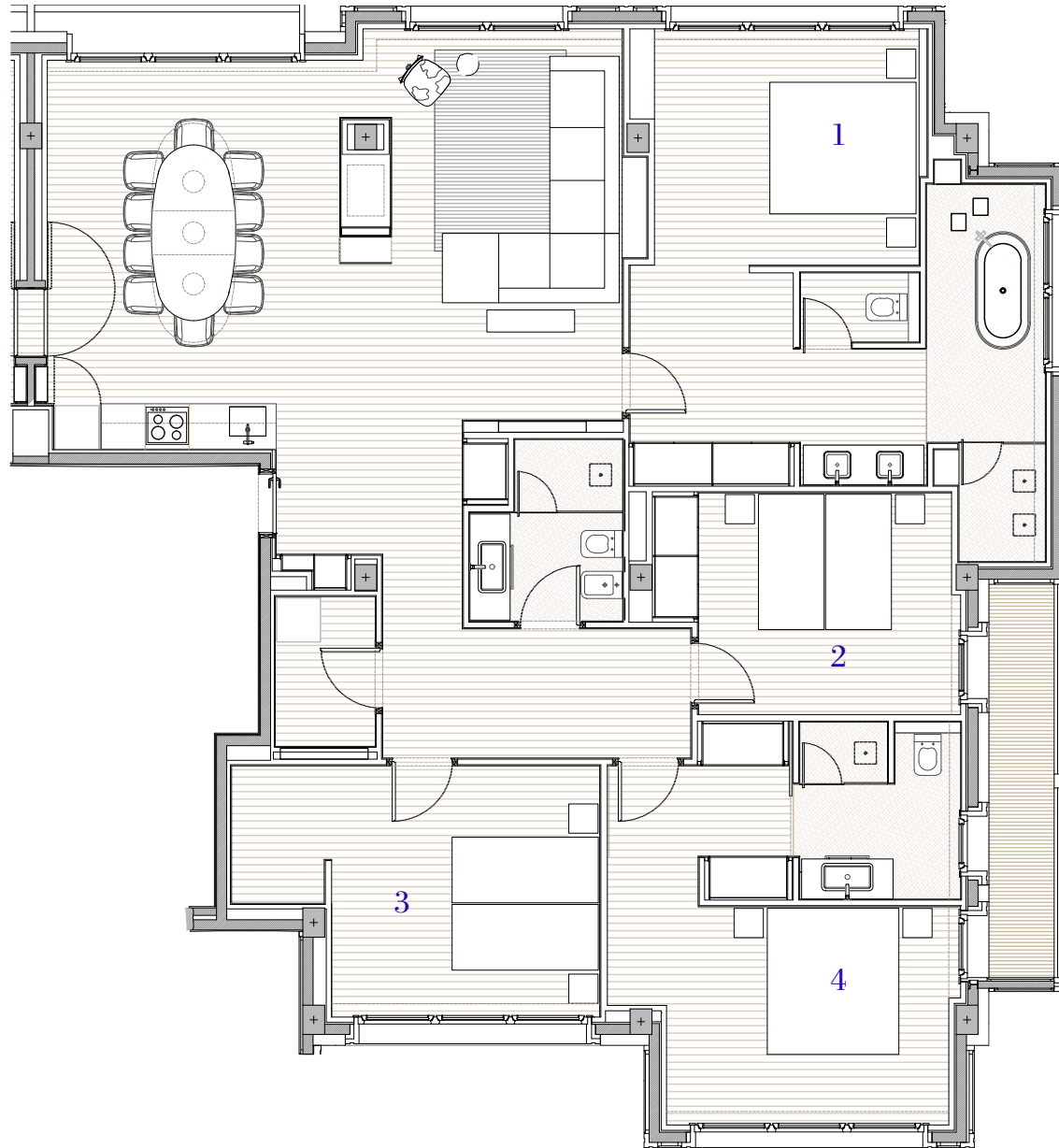
Floor 3



2 residences of 180 m²
1 residence of 360 m²
8 bedrooms



Floor 3 - 3A



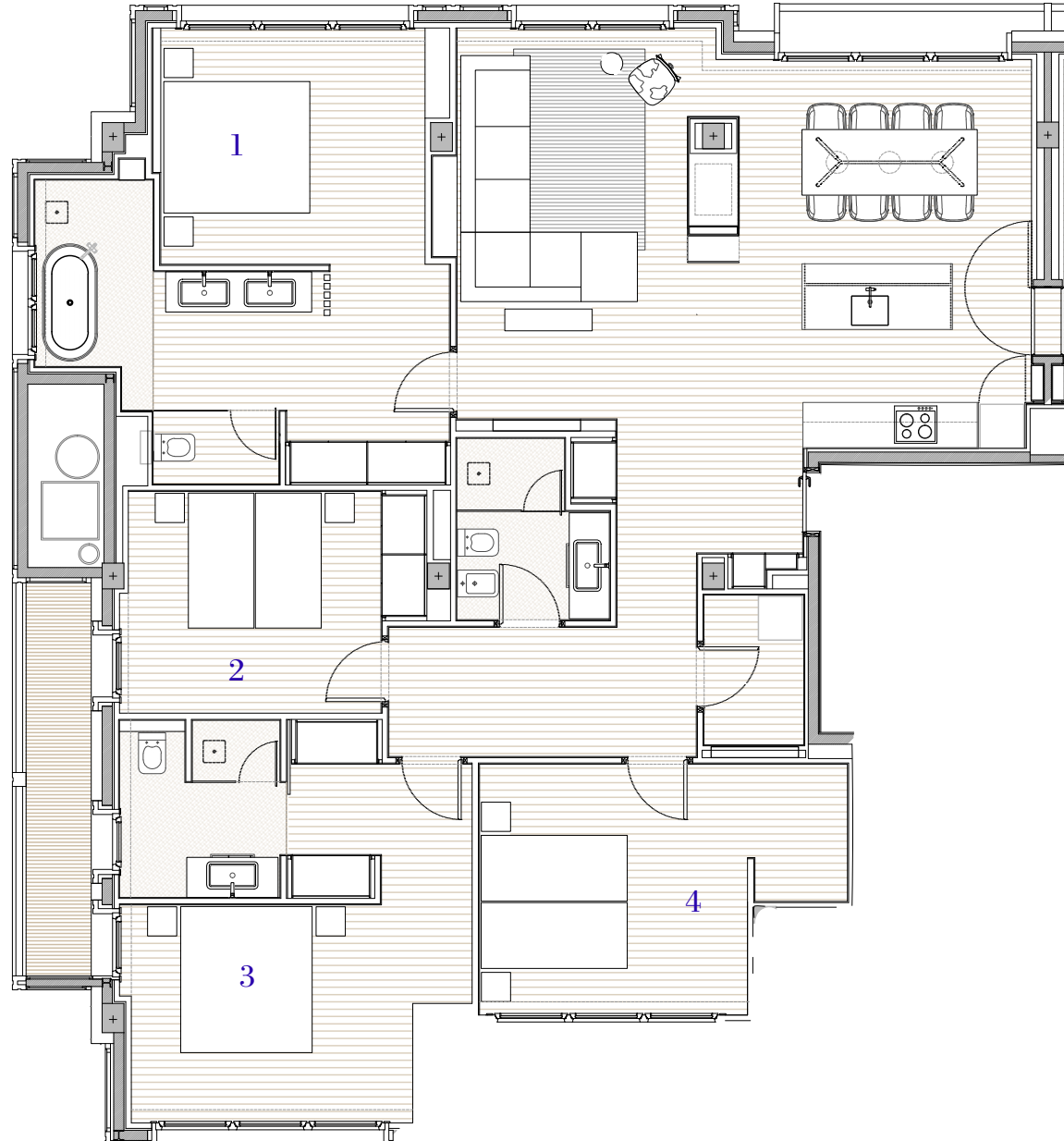
180 m²







Floor 3 - 3B



120 m²



Floor 4 - Duplex



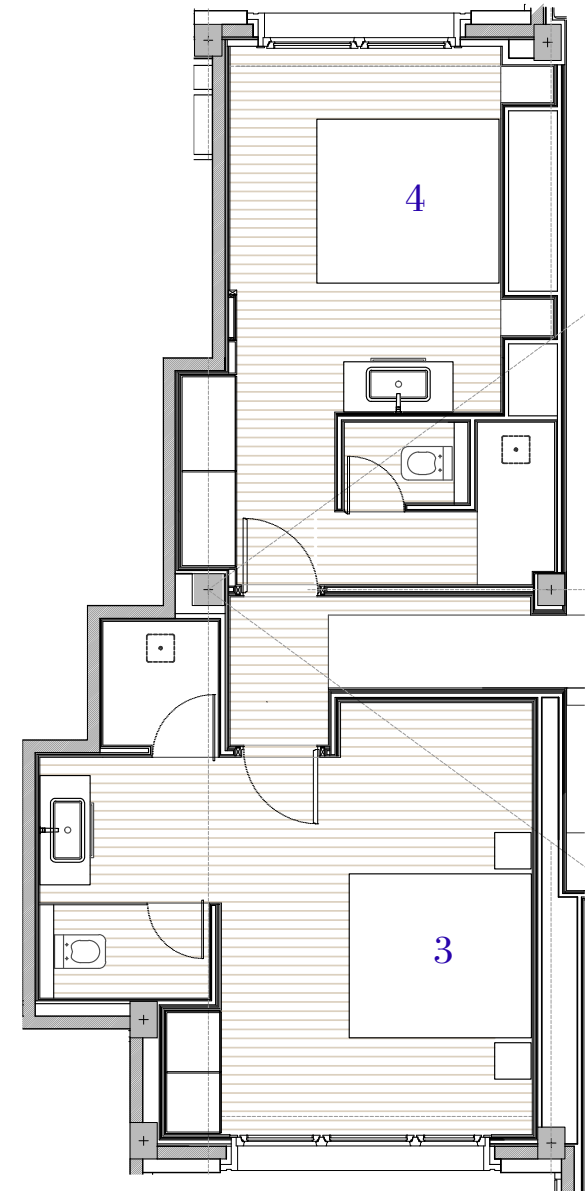
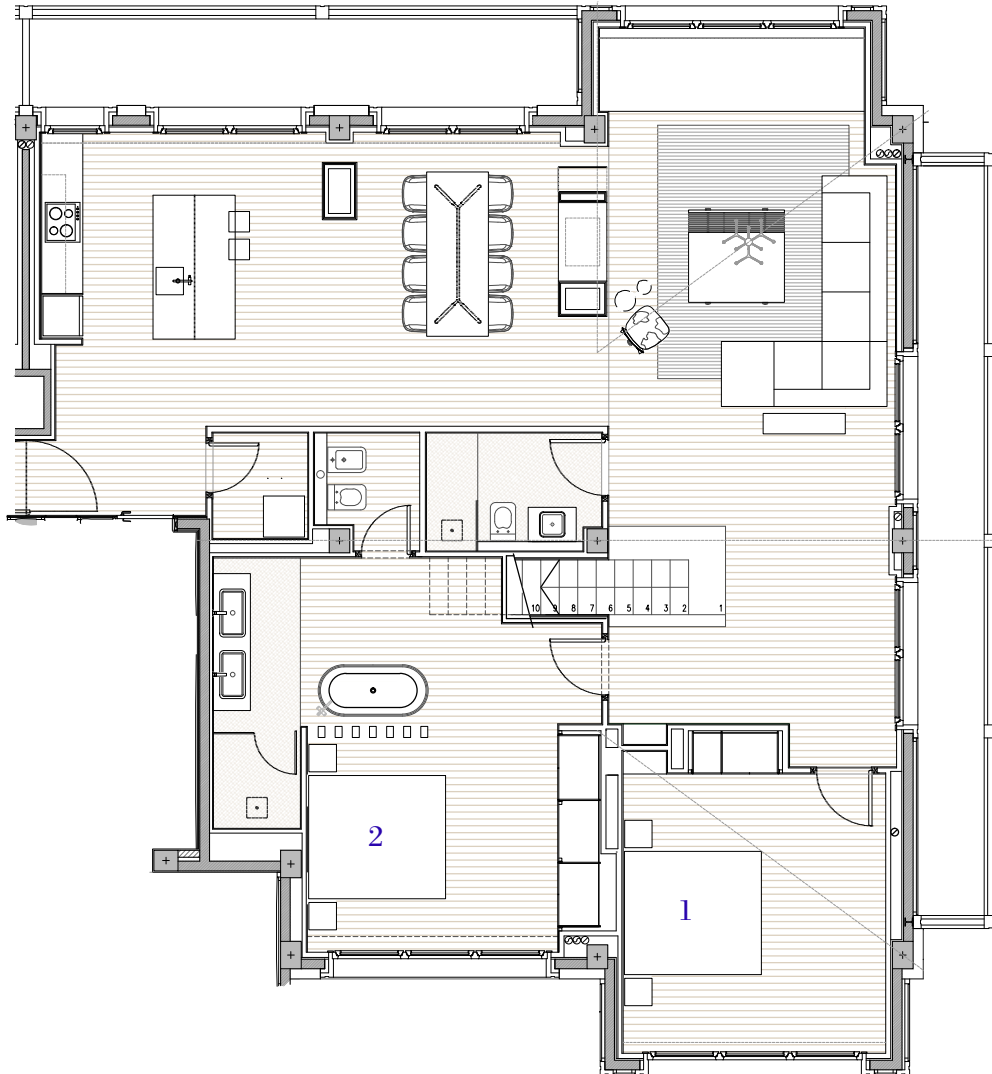
2 duplex of 250 m²
1 duplex of 500 m²
8 bedrooms







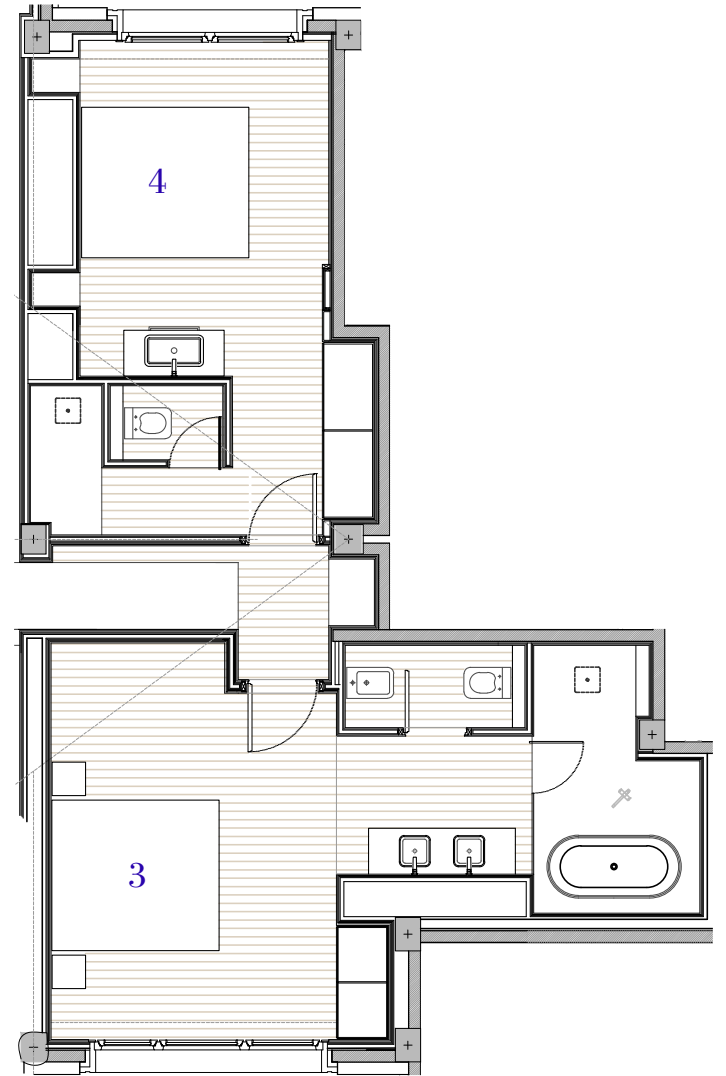
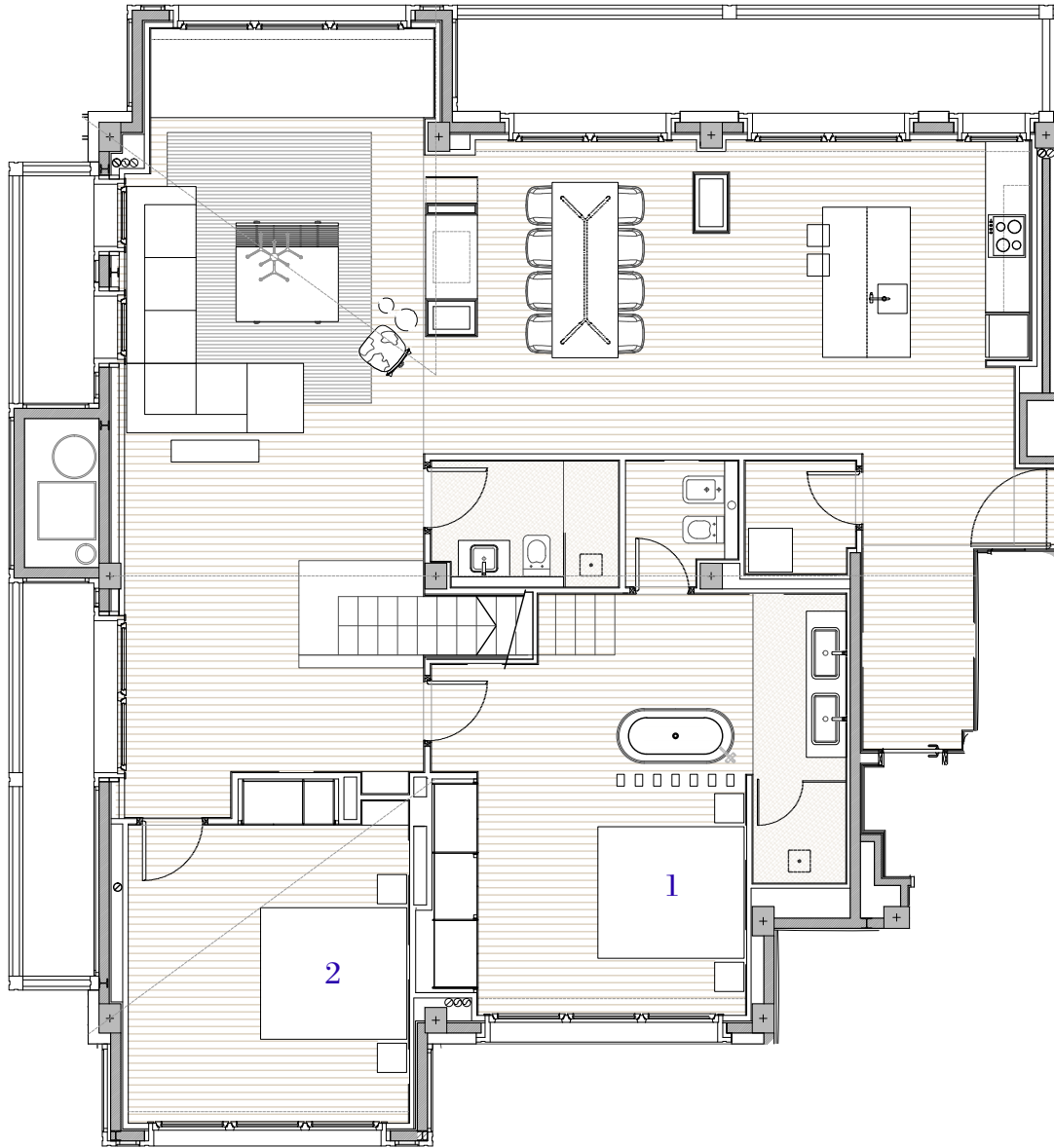
Floor 4 - 4A



Duplex 250 m²



Floor 4 - 4B



Duplex 250m²



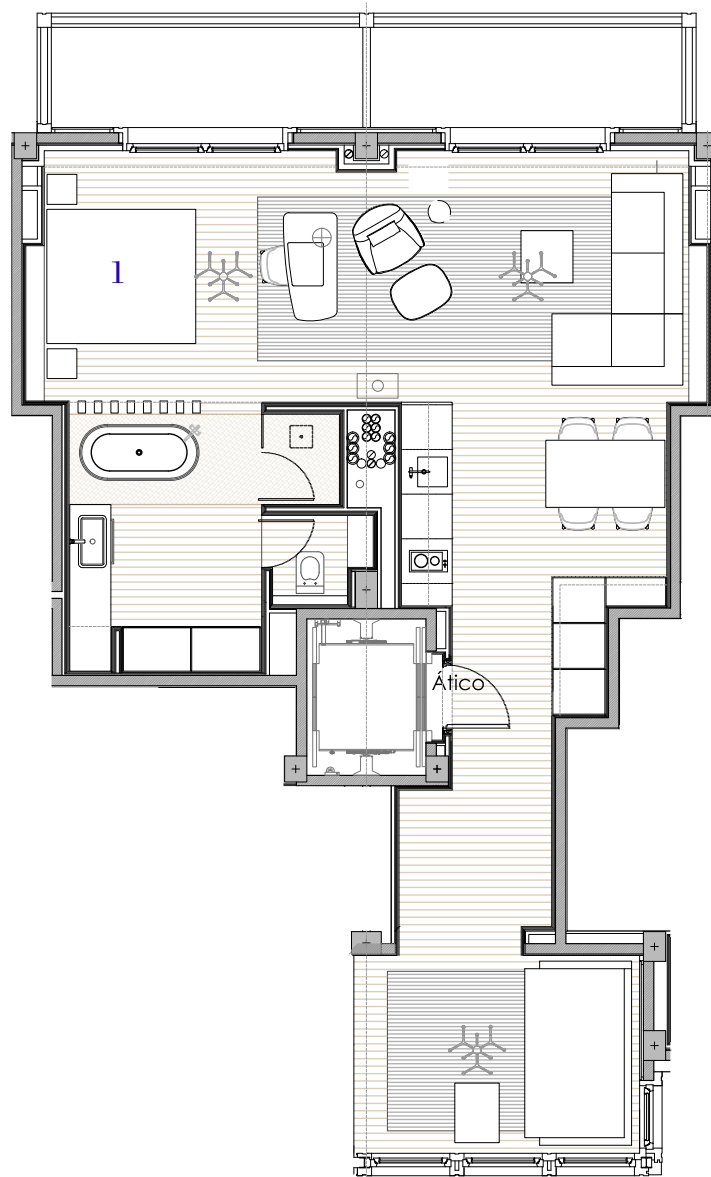
Floor 5



1 penthouse of 120 m²
1 bedroom



Floor 5 - Penthouse



120 m²







Rates & Services

Rates per night per Residence including IGI / VAT

- 1 bedroom Residence:
120 sqm with views to the ski slopes (Penthouse), starting at 1.140 €
- 2 bedroom Residence:
120 sqm with views to the village, starting at 910 €
- 2 bedroom Residence:
120 sqm with views to the ski slopes, starting at 1.050 €
- 4 bedroom Residence:
180 sqm with views to the ski slopes, starting at 1.980 €
- 4 bedroom Residence:
250 sqm with views to the ski slopes (Duplex), starting at 2.784 €
- 8 bedroom Residence:
360 sqm with views to the ski slopes, starting at 4.656 €
- 8 bedroom Residence:
500 sqm with views to the ski slopes (Duplex), starting at 5.484 €

Services included

- Daily buffet breakfast at the Gourmanderie
- Access to the 5.000 sqm Sport Wellness Mountain Spa
- Access to the gym area
- Nespresso coffee and tea selection in the Residence
- Complimentary minibar
- Daily international newspaper
- Wifi access
- Use of VIP - ski lockers at the cable car station
- Parking space
- "Molton Brown" amenities in the Residence
- Access to the "1.850 Club - Lounge"
- Butler service



